

EURO-profile nipples

Series 540 - Stainless steel 316



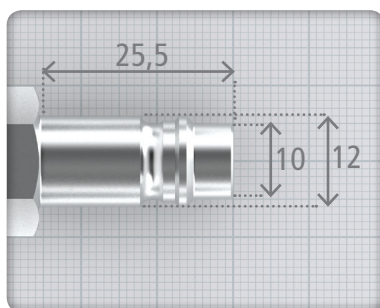
EURO-Profile Nipples

Stainless steel 316

Series 540 nipples are robust and impact-resistant nipples. They are made in AISI 316 steel, which gives a stainless and acid-resistant nipple.

The JWL nipples with external thread can also be delivered with teflon

Dimensions: Series 540



Dimensions in mm (1:1)

Compability

Standard: EURO

Flow diameter: 7,8 mm

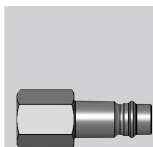
Connectable with the following:

Cejn 320, Hansen Auto Flo 24, Proquix 1420 & 1421, Legris 94xx A, Oetiker SC Series C, Prevost ESC 07/ERC 07, Rectus-Tema 25, 26 & 1600.

Available with the following connections:

Internal thread, external thread and hose connection

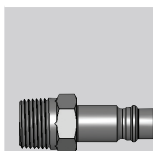
Thread



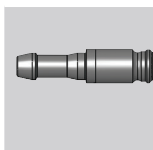
Nipples, connection

Article no.

1/4" BSP internal thread	540302
1/4" NPT Internal thread	540332*
3/8" BSP internal thread	540304
3/8" NPT Internal thread	540334*
1/2" BSP Internal thread	540305
1/2" NPT Internal thread	540335*



1/4" BSPT ext. thread	540312
1/4" NPT ext. thread	540342*
3/8" BSPT ext. thread	540314
3/8" NPT ext. thread	540344*
1/2" BSPT ext. thread	540315
1/2" NPT ext. thread	540345*



1/4" (6mm) hose con.	540322
5/16" (8mm) hose con.	540323
3/8" (10mm) hose con.	540324
1/2" (13mm) hose con.	540325

* On request



Made in Denmark

www.jwl.dk