

# Rectangular Multi-connector with $\varnothing 2$ One-touch Fittings

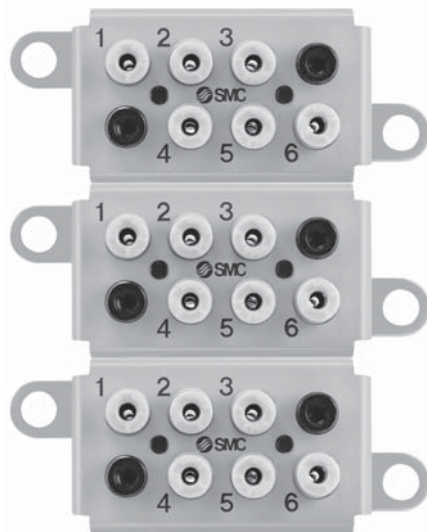
No. of Connecting Tubes:  $\varnothing 2 \times 6$

RoHS

Added  $\varnothing 2$  One-touch fittings to the multi-connector.

■ Multiple pipes can be collectively connected/  
disconnected in one-touch operation.

## ● Mounting example



<Actual size>

## Secure mounting

A single panel side opening for full access.

Plug case

Socket case

Panel side

## Clamp bolt

Fix the socket case  
and the plug case  
with the clamp  
bolts.

## Socket case fixing bolt

(M4 with head diameter of  $\varnothing 7$  or less)  
Provided by customer.

## Model

No. of connecting tubes	Tubing O.D.	Model	Weight	Release button color
6	$\varnothing 2$	KDM6-02-X955-1	42.6 g	Light grey

## Applicable Tubing

Tubing material	Nylon, Soft nylon, Polyurethane
Tubing O.D.	$\varnothing 2$

## Specifications

Fluid	Air
Operating pressure range <sup>Note)</sup>	-100 kPa to 1 MPa
Proof pressure	1.5 MPa
Ambient and fluid temperature	-5 to 60°C (No freezing)

Note) Please avoid using in a vacuum holding application such as a leak tester, since there is leakage.

## Multi-connector Variations

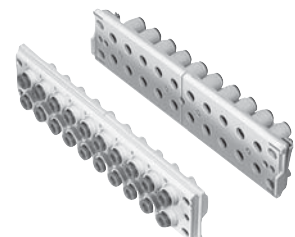
### Series DMK

No. of connecting tubes:  $\varnothing 3.2$ ,  $\varnothing 4 \times 6, 12$



### Series KDM

No. of connecting tubes:  $\varnothing 3.2$  to  $\varnothing 8 \times 10, 20$



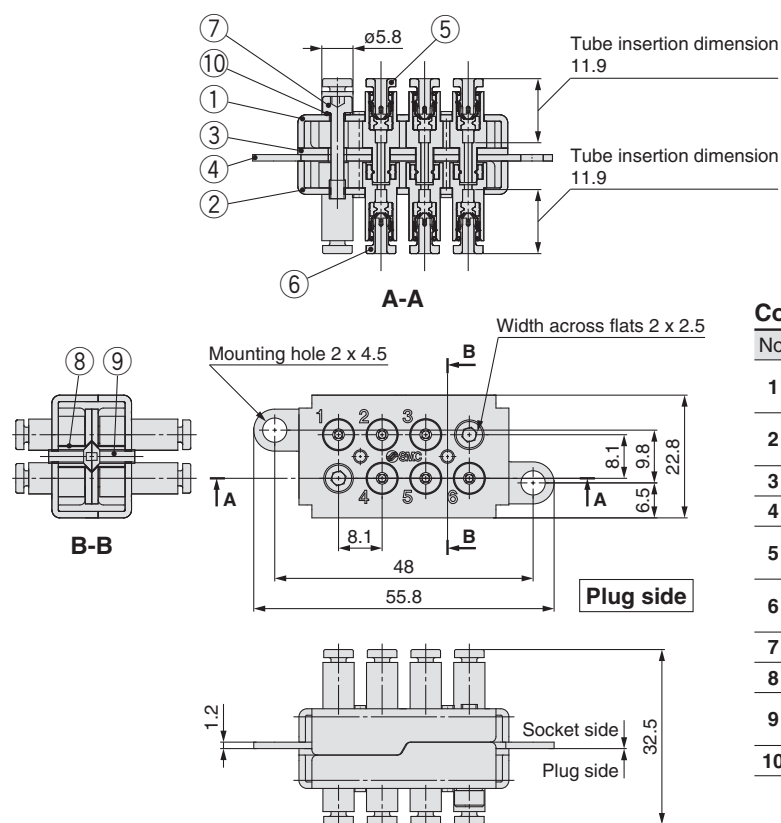
# KDM6-02-X955-1



12-EU596-UK

# KDM6-02-X955-1

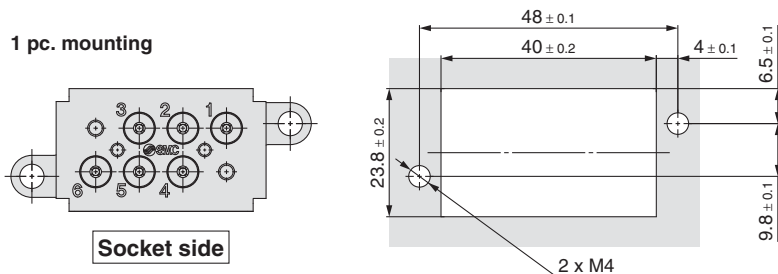
## Dimensions/Construction



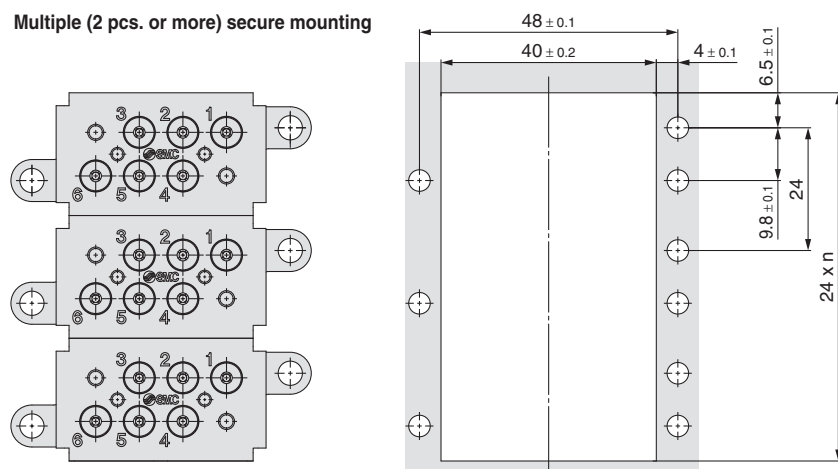
### Component Parts

No.	Description	Material	Q'ty	Note
1	Case (A)	SPCC	1	Grey semi-gloss baking finish after zinc chromate plating
2	Case (B)	SPCC	1	Grey semi-gloss baking finish after zinc chromate plating
3	Plate (A)	Stainless steel 304	1	
4	Plate (B)	Stainless steel 304	1	
5	Plug connector $\phi 2$	—	6	Release button: Light grey
6	Socket connector $\phi 2$	—	6	Release button: Light grey
7	Hexagon socket head cap screw	SCM435	2	Black zinc chromated
8	Spacer	C2700T	4	Electroless nickel plating
9	Cross recessed countersunk head screw	SWRM	4	M2.5 x 8, Black zinc chromated
10	Gasket	PVC	2	

### Panel fitting dimensions



### Multiple (2 pcs. or more) secure mounting



## SMC Corporation

SMC CORPORATION  
Akihabara UDX 15F, 4-14-1, Sotokanda, Chiyoda-ku, Tokyo 101-0021, JAPAN  
Phone: 03-5207-8249 FAX: 03-5298-5362  
SMC CORPORATION All Rights Reserved

### European Marketing Centre (EMC)

Zuazobidea 14, 01015 Vitoria  
Tel: +34 945-184 100 Fax: +34 945-184 124  
URL <http://www.smc.eu>